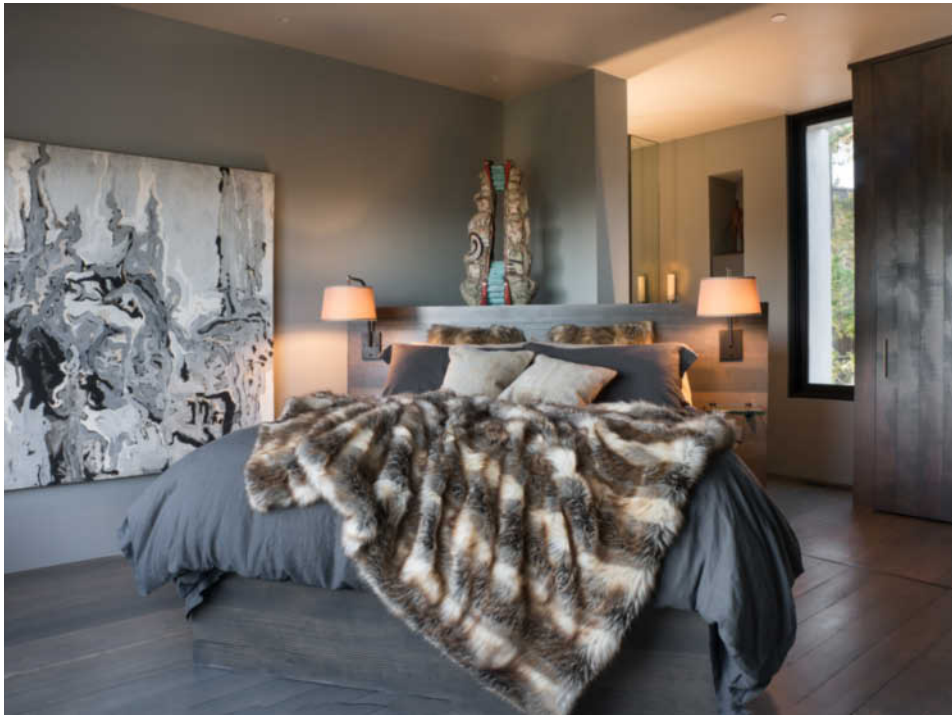




ARCHITECTURAL MASTERPIECE  
3900 Ronda Road

Sotheby's  
INTERNATIONAL REALTY







Located on the ridge in the Estates area of Pebble Beach, this contemporary masterwork designed by Conrad Sanchez of Conrad Asturi Studios features superb design details, luxury amenities and an indoor/outdoor lifestyle. Mature Coastal Oak trees shield the entry to the property, providing privacy in a spectacular landscape. The beautiful ocean view is framed by expansive window walls on two floors. An open plan great room has a stunning hearth that anchors the design,

with its custom steel and wood dining table and chef's kitchen it's the perfect place to live and entertain. The residence features two master suites plus a third bedroom as well as an attached guesthouse with bath for a total of four bedrooms and four and a half baths. The breezeway connecting the guest and main residence has an outdoor kitchen and lounge area. A series of artful cast concrete terraces cascade down the back of the property; with two firepits they are perfect for an entertaining lifestyle.



## Offered at \$8,500,000

Showing by appointment only  
Designed by Harvey and Conrad Sanchez  
of Conrad Asturi Studios, Inc.  
WEB: 0474728

---

### Michele Altman

CalBRE#: 01310623  
t: 831.214.2545  
e: [Michele.Altman@Sothebyshomes.com](mailto:Michele.Altman@Sothebyshomes.com)

Carmel Rancho Brokerage  
200 Clocktower Place, Suite 100-D, Carmel, CA 93923  
[www.carmelrealestates.com](http://www.carmelrealestates.com)

FSC logo will  
appear here

© MMXVII Sotheby's International Realty, Inc. All Rights Reserved. This material is based upon information which we consider reliable but because it has been supplied by third parties, we cannot represent that it is accurate or complete and it should not be relied upon as such. This offering is subject to errors, omissions, changes including price or withdrawal without notice. If your property is listed with a real estate broker, please disregard. It is not our intention to solicit the offerings of other real estate brokers. We are happy to work with them and cooperate fully. Sotheby's International Realty and the Sotheby's International Realty logo are registered (or unregistered) service marks used with permission. Operated by Sotheby's International Realty, Inc. Real estate agents affiliated with Sotheby's International Realty, Inc. are independent contractor sales associates and are not employees of Sotheby's International Realty, Inc. Equal housing opportunity. SP

**Sotheby's**  
INTERNATIONAL REALTY